



PRE-WALL INSTALLATION SYSTEMS

relax

That magical feeling when
you come home and
everything looks so good

20
YEARS



Tradition is the cornerstone that is the base of our vision

When we started twenty years ago, we had the idea that we wanted to create beautiful functional products that would make everyday life easier and more enjoyable. Today, we have a functioning family business, that continues to grow and spread throughout the world not only our products, but also the idea in which we still believe.

Radka Prokopová, Executive Director



**20
YEARS**

Content

6–15

Flush plates FLAT

Elegance and beauty – these are the fine characteristics of our flush plates FLAT. They were designed with the most demanding customers in mind.



16–17

Flush plates THIN

The clean lines and precision manufacture contribute to make flush plates THIN almost invisible by merging with the tiles in your bathroom.



22–31

Pre-wall installation systems ALCA

Pre-wall installation systems ALCA are manufactured using the latest technology and top grade materials. Thus they have been tested and proven for long-term durability and functionality.



26–29

Saving water and fresh air

Efficient and discreet. Pre-wall installation systems ALCA think of you. While ECOLOGY guarantees the reduction of water consumption, powerful extraction fan ensures your personal comfort.



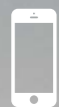
Together we
create a place
where you can
re-energize



Lets make it simple

We have prepared a QR code for each product for your convenience. To read the QR codes just download the application to your smart phone or tablet. Then scan the code to quickly reach the desired section of our website. Here you will find detailed descriptions and parameters of the selected product. No more trouble with searching for information. A smart way to get your information quickly and easily.

Flush plates FLAT	6–15
NIGHT LIGHT	10–11
FLAT ALUNOX	14–15
Flush plates THIN	16–17
Flush plates ALCA	18–21
Pre-wall installation systems ALCA	22–31
ECOLOGY	26–27
With ventilation	28–29
For building into solid walls	30
For dry build up	31
For people with reduced mobility	31
Mounting frames ALCA for plumbing fixtures	32
For wash-basins and faucets	32
For bidets, urinals and others	32
Sensor program	33
Specification of ALCA pre-wall installation systems	34–35
Company Alcaplast	36–37



Visit us on the Web



FLUSH PLATES FLAT

Harmony of materials



Flush plates FLAT series.
Timeless look, premium materials and flawless operation.



Anti-fingerprint

The surface of the FLAT flush plates have a special protective layer, which does not show smears or finger marks. Due to this protective layer, the flush plates do not require frequent maintenance or cleaning thus greatly extending their lifetime.



AM100/1000 + flush plate FUN

Pre-wall installation system for building into solid walls with flush plate alunox-matt



Simply compatible

We believe that perfect things do not have to be complicated. That's why we developed our flush plates so that they can be combined with all pre-wall installation systems ALCA. Therefore you can select any flush plate that you like in style and you are not limited. In addition, the installation is very easy and quick. Seamless and easy is also the exchange of older flush plates on already installed systems.

Glass flush plates STRIPE

Glass flush plates in white or black color fit any modern bathroom thanks to the fine design. Emphasis on details and a simple shape makes exclusive glass material and stainless steel elements stand out.



NIGHT LIGHT, innovative touch-free flush plate, responds to the approach of the hand. It works without direct contact for even greater comfort. The interconnection of design and functionality won the prestigious iF Design Award of 2018.



Barbora Škorpilová

Architect, designer and the creator of the flush plates FLAT ALUNOX, NIGHT LIGHT and M370–M475 for ALCAPLAST, Barbora is today known for her association with the MIMOLIMIT studio which she founded in 2001.

FLUSH PLATES FLAT



Ultimate flexibility

Our flush plates excel in the number of adjustable parameters. Choose the colour according to your current mood or behavior of the flush plate.

Touch-free flush plates for pre-wall installation systems



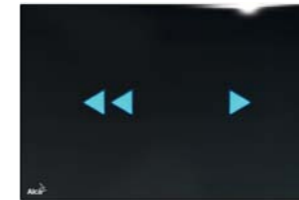
Visit us on the Web



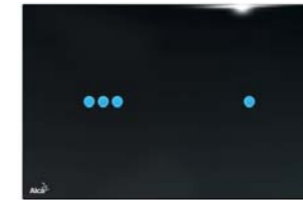
Future at your fingertips



NIGHT LIGHT-1
Glass-black
External dimensions: 247 x 165 x 8 mm



NIGHT LIGHT-2
Glass-black
External dimensions: 247 x 165 x 8 mm



NIGHT LIGHT-3
Glass-black
External dimensions: 247 x 165 x 8 mm

Innovative touch-free flush plates NIGHT LIGHT

We introduce our new backlit flush plates NIGHT LIGHT, that only react to the approach of the hand, i.e. without direct contact. With a sophisticated system, you can easily adjust the color and other parameters exactly according to your wishes.

Available in three design variants





reddot award 2014
winner

To receive the award is a beautiful feeling for one evening, but the true inspiration is you and your satisfaction that will last for years

We wanted to keep our flush plates FLAT not only stylish, but also practical, because we do not believe in beauty without purpose. Therefore we are pleased that our philosophy gained recognition with the award of a Red Dot Award 2014.



↓
A105/1120
Mounting frame for bidet

↓
AM101/1120 + flush plate TURN
Pre-wall installation system for dry build up with flush plate alunox-matt/polished

↓
APZ1 + grid BUBLE
Stainless steel shower drain with perforated grid

edolot





FUN
Alunox-matt
External dimensions: 247 x 165 x 5 mm
Flushing technology: dual
Material: metal

Flush plates for pre-wall installation systems

These flush plates can easily be installed on any of our pre-wall installation systems. These systems are the flagship of our product development. A sophisticated solution allows you to set variable water volumes for flushing, so you do not waste water.



reddot award 2014 winner



Visit us on the Web



Beauty where you do not expect it



STING
Alunox-matt/polished
External dimensions: 247 x 165 x 26 mm



TURN
Alunox-matt/polished
External dimensions: 247 x 165 x 5 mm



STRIPE
Alunox-matt/polished
External dimensions: 247 x 165 x 20 mm



AIR
Alunox-matt
External dimensions: 247 x 165 x 29 mm

Illuminated FLAT ALUNOX flush plate

Introducing the flush plate AIR LIGHT, which in combination with backlighting brings a pleasant subdued lighting that highlights the functional and design solutions of your bathroom.



Available in following colours: blue, red, green, white and rainbow



Visit us on the Web

FLUSH PLATES THIN

Thin elegance



NEWS

↓
**AM1101/1200
Sádromodul Slim
+ M572**

Pre-wall installation system
for dry build up
with plastic flush plate



New collection
THIN is synonym
for the thin lines
in the basic
product range

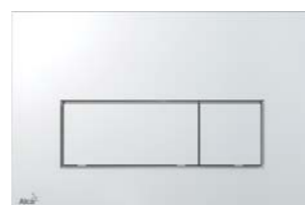


5 mm



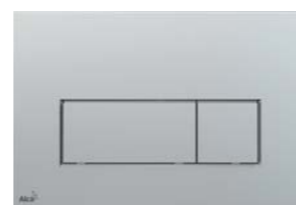
M570

White
External dimensions: 247 × 165 × 5 mm



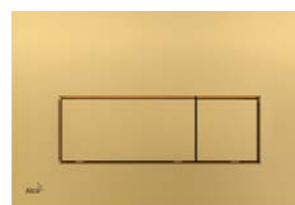
M571

Chrome-polished
External dimensions: 247 × 165 × 5 mm



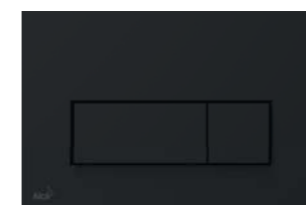
M572

Chrome-matt
External dimensions: 247 × 165 × 5 mm



M575

Gold
External dimensions: 247 × 165 × 5 mm



M578

Black-matt
External dimensions: 247 × 165 × 5 mm



Only 5 mm

Introducing the new flush plates labeled THIN, which thanks to its flat profile stands out only five millimeters above the tiles. Guaranteeing a perfect and discreet merge with the rest of your toilet or bathroom.

Pure lines

Clean lines and precise workmanship combined with silent operation are a winning combination. Series flush plates THIN is available in five colors from the traditional white, through the favourite chrome, extravagant gold to black-matt finish.



17



AM100/850 Alcamodul + M570

Pre-wall installation system for building into
solid walls with plastic flush plate

18

16



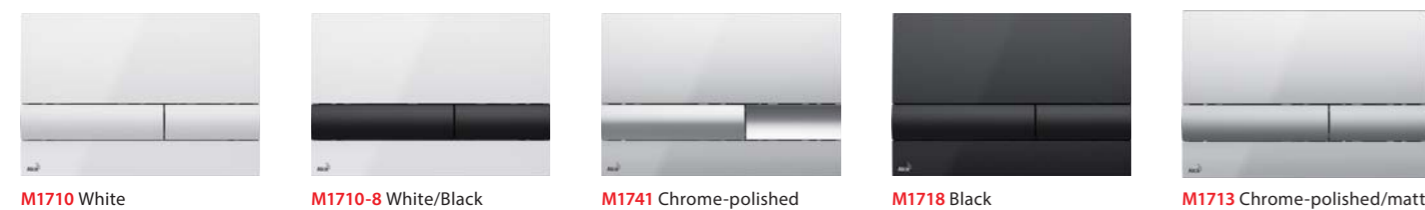
Visit us on the Web

THIN (DEPTH 5 MM)



FROM III. Q

BASIC



reddot award 2014 winner

FLAT ALUNOX (ALUMINUM) / **FLAT INOX** (STAINLESS STEEL)



FLAT COLOUR (COLOUR HIGH GLOSS)



FLAT GLASS (GLASS)



AIR LIGHT (ALUMINUM WITH ILLUMINATION)



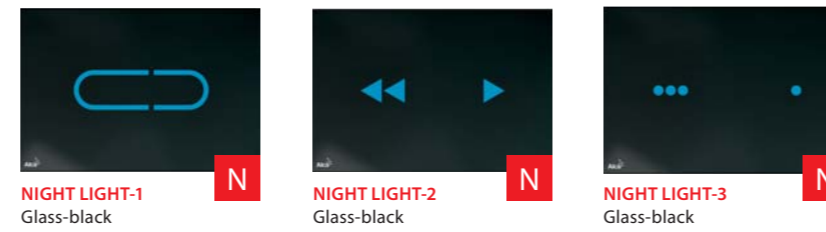
AIR LIGHT Alunox-matt

FLAT ANTIC (BRONZE-ANTIC)



FUN-ANTIC Bronze-antic

TOUCH-FREE (GLASS)



ANTIVANDAL



M279 Metal

M279S Metal (AC power supply)
M279SB Metal (DC battery operated)

SENSOR



M370S White (AC power supply)
M370SB White (DC battery operated)

M371S Chrome-polished (AC power supply)
M371SB Chrome-polished (DC battery operated)



Choose the perfect final piece of the mosaic





Visit us on the Web



PRE-WALL INSTALLATION SYSTEMS ALCA

Czech engineering



We trust our products thus we provide an extended 15 year warranty

Complete range

The range of pre-wall installation systems ALCA is designed to be able to cover all possible uses. This includes not only building into solid walls, dry build up into plasterboard but also an option to install the system into open bathroom spaces.

15
YEAR GUARANTEE

AM1115/1000 Renovmodul Slim + flush plate STING

Pre-wall installation system for building into solid walls with flush plate alunox-matt/polished



Systems Slim

In small spaces, concrete panel housing units, plasterboard partitions or reconstructions. Slim systems have a thickness only 84 mm, so you can save space and easily realise even a small bathroom or toilet.

Systems with ventilation

In the event of insufficient natural ventilation of the toilet area, we offer solutions with forced air ventilation through the toilet bowl. These models of pre-wall installation systems ALCA are marked "V" in their code.



ECOLOGY systems

We perceive the needs of our customers, so we are introducing a water-saving installation systems ECOLOGY. This is our response to the latest trend of toilet bowls with a desired flushing volume that is less than 3/6 l. For these toilet bowls it is necessary to use a pre-wall installation systems which can cope with such a small volume of water. Alcaplast provides all the necessary systems for flush volumes of 2/4 l which is the minimum specified in the norms. These systems can be identified on the basis of the letter "E" in the model name.



Touch-free flushing systems

The sensor program includes products that are designed for hands-free flushing of WC and urinal. They are designed for high usage installations.

Mounting frame A114S/1200 is designed for automatic WC flushing systems (ASP3), A107S/1200 for automatic flushing systems for urinals (ASP4). All standard pre-wall installation systems (except Slim) can be used for sensor flush plates (M370, M371) and the new touch-free flush plates NIGHT LIGHT.



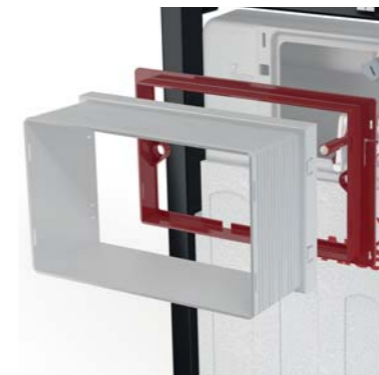
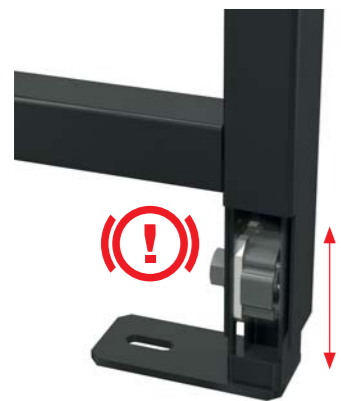
Visit us on the Web



PRE-WALL INSTALLATION SYSTEMS ALCA

Quiet operation of ALCA products will not disturb your relaxation

Easy installation



New feet lock system

There is a new system for the frame feet that allows you to easily set the necessary building height and then tighten to ensure its final position. This eliminates the need for the assistance of another person during installation and also increases the accuracy of the installation.



Preparation for the installation of bidet devices

We are responding to the popularity of bidet devices and therefore our systems have integrated holes for water connection to the desired device (ie. adaptors). This adjustment allows seamless operation of bidet spray, bidet seat or other systems on the toilet bowl.



Water supply pipe with o-ring

The bayonet system allows the installation of the flexible hose and the fill valve without tools. Everything should be tightened by hand only.



Installation frame and sleeve

The fastening of the sleeve frame to the reservoir has been changed. Now, installation is accomplished by simply snapping it on, thus greatly speeding up the installation time. This frame can also be used when installing into plasterboard.



A new control mechanism

The new series of modules has an upgraded control mechanism between the flush plate and flushing valve. Thanks to the smart system of fixing system into the cistern it holds perfectly. In order to minimize the noise effect of the flush plate when flushing, the screws that come into contact with the flush plate have been covered with soft tips, which absorbs shocks generated by pressing the flush plate.



Sliding rail holder of waste connector

The new way of fixing the waste connector makes the installation much easier. The waste connector can be now moved horizontally and its depth can be modified with respect to the frame in eight positions up to 93 mm. It's much easier to mount different types of toilet bowls that would otherwise require more complex interventions when they are installed.

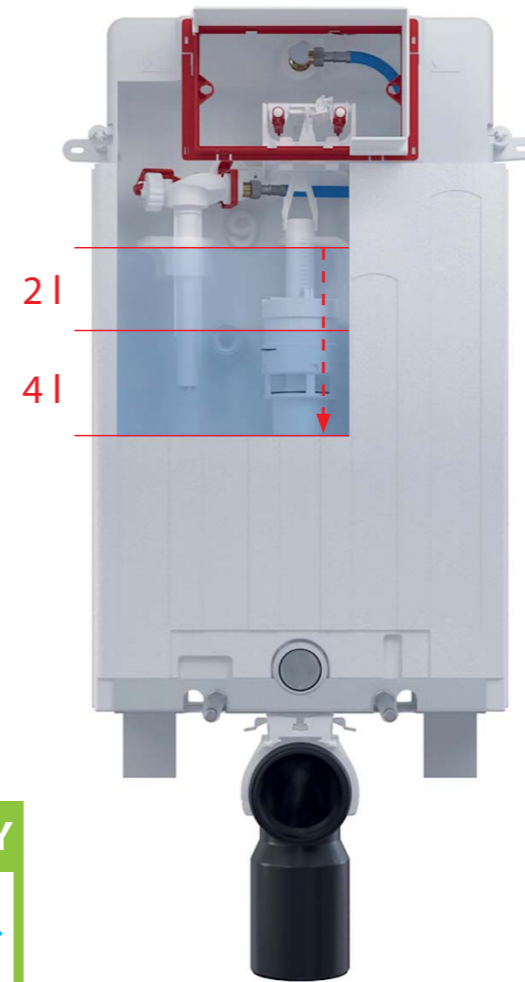


Visit us on the Web



PRE-WALL INSTALLATION SYSTEMS ALCA ECOLOGY

Saving water



You can individually set the flushing water volume

Innovative product in the field of sustainable development

Pre-wall installation system ECOLOGY that uses a small volume of water for flushing the toilet bowl, won the prestigious Gaia Awards 2014 exhibition THE BIG 5 in Dubai.



15
YEAR GUARANTEE

AM115/1000E Renovmodul + flush plate STRIPE-WHITE

Pre-wall installation system ECOLOGY for building into solid walls with flush plate Inox-white polished

↓ **Systems ECOLOGY**

Pre-wall installation systems ALCA Ecology contain the flush valves which allow flushing with a smaller water volume than those for standard systems. The dual volume technology for flushing 2/4 l meets the latest environmental and economic requirements.

↓ **Change your built in WC system to ECOLOGY**

Any pre-wall installation system ALCA (except Slim system) can be easily converted to an ECOLOGY variant by exchanging for the flush valve A06E and choosing the correct type of the WC bowl. The flushing volume can be continuously adjusted from 2 to 9 l. At the same time it can be, if necessary, returned to the standard flushing volume 3/6 l.

↓ **Conserve nature and save your money**

Pre-wall installation system has to meet the requirements defined by EU standards. The volume of the flushing water is for the standard systems usually 3/6 l. The trend is to reduce the production of waste water by reducing the consumption of water intended for flushing, thereby reducing the environmental impact. The lower water consumption also saves your money.



Visit us on the Web



PRE-WALL INSTALLATION SYSTEMS ALCA WITH VENTILATION

Always fresh air

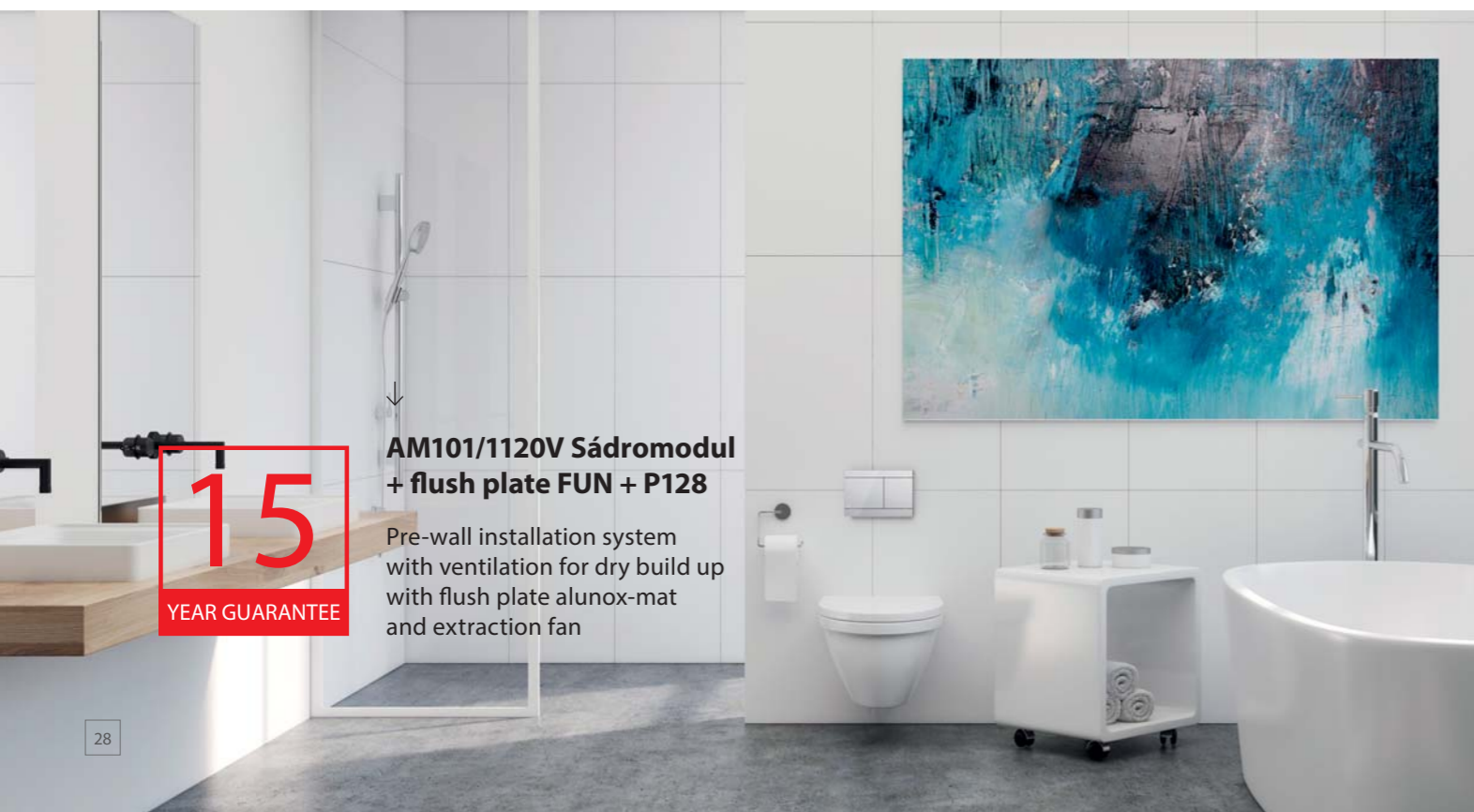


Effective and quiet ventilation with immediate elimination of unwanted odours



Modules with ventilation

Our range of pre-installation systems with ventilation thanks to the powerful pipe extraction fan ensures removal of the odour directly from the toilet bowl and directs it out of the room.



AM101/1120V Sádromodul + flush plate FUN + P128

Pre-wall installation system with ventilation for dry build up with flush plate alunox-mat and extraction fan

15
YEAR GUARANTEE



System solution

The system features powered ventilation to extract odour directly from the toilet bowl. These are models of pre-wall installation systems ALCA marked "V" and the extraction fan.

It is particularly suitable for toilets without windows, or as ventilation for toilets placed in bathrooms. Thus ensuring effective ventilation of the bathroom and reducing the moisture and odours when using the toilet.



For all types of WC modules

The variant with ventilation is offered for all types of pre-wall installation systems.

Sádromodul AM101/1200V and **Jádromodul** AM102/1200V are designed for dry build up into the plasterboard.

Renovmodul AM115/1000V is designed for building into solid walls during the renovations.



No additional costs

The extraction fan, which is connected to WC modules with ventilation, is a one-time expense. When choosing this method of extraction the customer does not have to think about any other expenses, such as charcoal filters.



Visit us on the Web



PRE-WALL INSTALLATION SYSTEMS ALCA

For building into solid walls



AM112 Basicmodul
Wall concealed WC cistern



AM100/850 Alcamodul
Pre-wall installation system for building into solid walls



AM100/1000 Alcamodul
Pre-wall installation system for building into solid walls



AM115/1000 Renovmodul
Pre-wall installation system for building into solid walls



AM1112 Basicmodul Slim
Wall concealed WC cistern



AM1115/1000 Renovmodul Slim
Pre-wall installation system for building into solid walls

Properties of ALCA pre-wall installation systems



Compatible with all flush plates ALCA



Warranty 15 years



Simple and fast installation



Load capacity 400 kg



The system can be adjusted to flush from 2 to 9 liters of water

H = Installation depth

For dry build up



AM101/850 Sádromodul
Pre-wall installation system for dry build up (plasterboard)



AM101/1000 Sádromodul
Pre-wall installation system for dry build up (plasterboard)



AM101/1120 Sádromodul
Pre-wall installation system for dry build up (plasterboard)



AM101/1120D Sádromodul
Pre-wall installation system buildable for dry build up (plasterboard)



AM1101/1200 Sádromodul Slim
Pre-wall installation system for dry build up (plasterboard)



AM102/850 Jádromodul
Pre-wall installation system for dry build up (especially for renovation of concrete panel housing units)



AM102/1000 Jádromodul
Pre-wall installation system for dry build up (especially for renovation of concrete panel housing units)



AM102/1120 Jádromodul
Pre-wall installation system for dry build up (especially for renovation of concrete panel housing units)



AM116/1120 Solomodul
Pre-wall installation system for dry build up (self-supporting)

ECOLOGY



AM100/1000E Alcamodul
Pre-wall installation system ECOLOGY for building into solid walls



AM115/1000E Renovmodul
Pre-wall installation system ECOLOGY for building into solid walls



AM101/1120E Sádromodul
Pre-wall installation system ECOLOGY for dry build up (plasterboard)



AM102/1120E Jádromodul
Pre-wall installation system ECOLOGY for dry build up (especially for renovation of concrete panel housing units)

With ventilation



AM115/1000V Renovmodul
Pre-wall installation system with ventilation for building into solid walls



AM101/1120V Sádromodul
Pre-wall installation system with ventilation for dry build up (plasterboard)



AM102/1120V Jádromodul
Pre-wall installation system with ventilation for dry build up (especially for renovation of concrete panel housing units)



P128
Extraction fan for pre-wall installation systems with ventilation

For people with reduced mobility



AM116/1300H Solomodul
Pre-wall installation system for dry build up (self-supporting) – for people with reduced mobility



AM101/1300H Sádromodul
Pre-wall installation system for dry build up (plasterboard) – for people with reduced mobility



A106/1120
Mounting frame for handle

Attributes of the program for people with reduced mobility



Reinforced construction



Possibility of supporting handles installation



Barrier-free solutions



Comfortable accessibility of flushing



MPO10
Remote pneumatic flush for hand operation, white, installation: into the wall



MPO11
Remote pneumatic flush for hand operation, chrome-polished, installation: into the wall



MPO12
Remote pneumatic flush for foot operation, metal, installation: onto the floor



MPO13
Remote pneumatic flush for foot operation, metal, installation: onto the wall

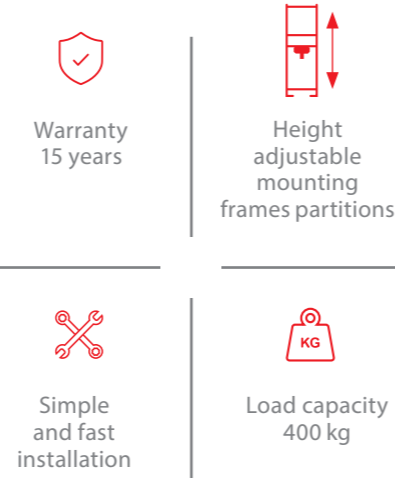
MOUNTING FRAMES

For wash-basins and faucets



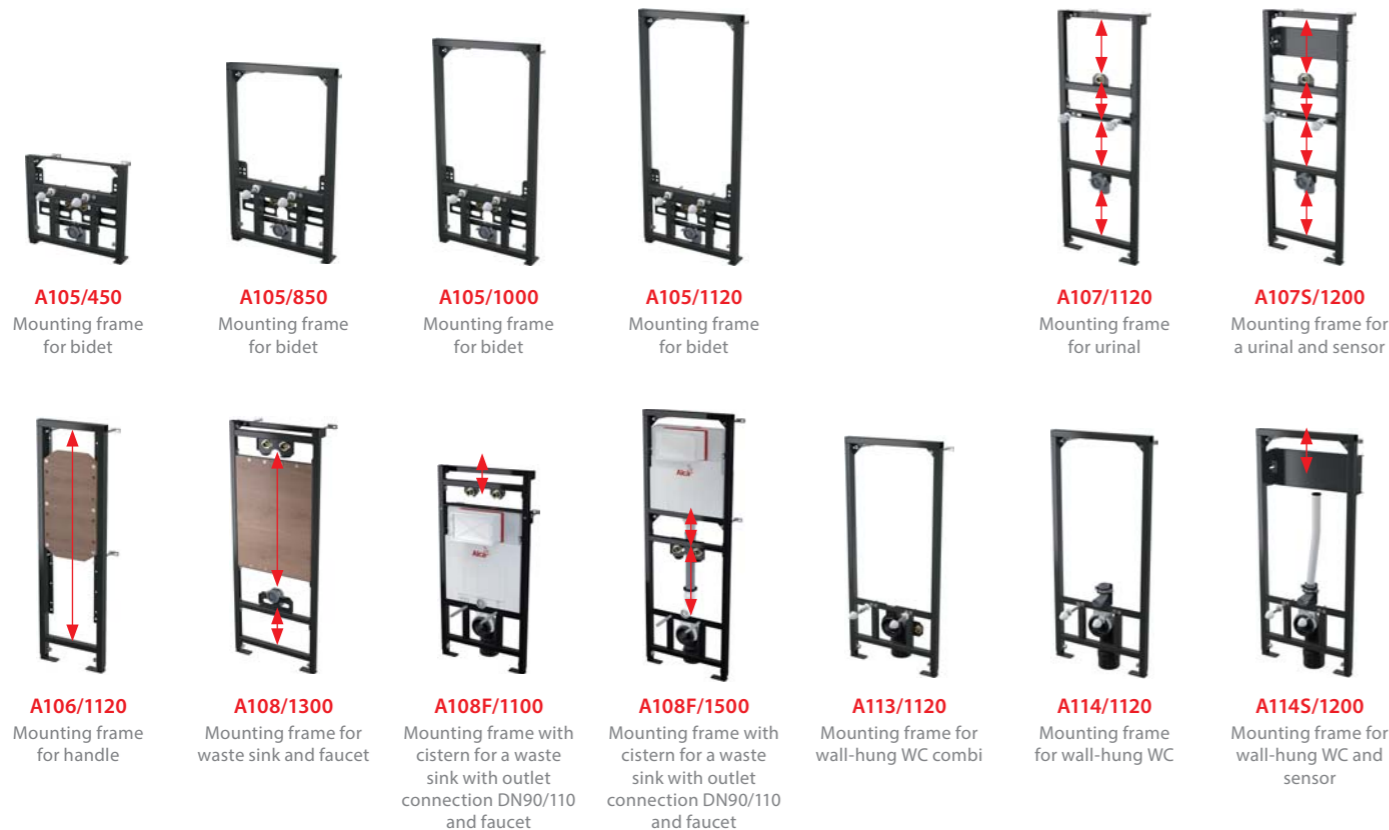
A104/850 Mounting frame for wash-basin
A104/1000 Mounting frame for wash-basin
A104/1120 Mounting frame for wash-basin
A117B Mounting frame for faucet to the plasterboard structure
A104A/1120 Mounting frame for wash-basin and faucet
A104B/1120 Mounting frame for faucet
A104AVS/1120 Mounting frame for wash-basin and faucet with built-in trap
A104PB/1120 Mounting frame for built-in mixer
A117PB Mounting frame for built-in mixers in plasterboard structure

Mounting frames attributes



Warranty 15 years
 Height adjustable mounting frames partitions
 Simple and fast installation
 Load capacity 400 kg

For bidets, urinals and others



A105/450 Mounting frame for bidet
A105/850 Mounting frame for bidet
A105/1000 Mounting frame for bidet
A105/1120 Mounting frame for bidet
A107/1120 Mounting frame for urinal
A107S/1200 Mounting frame for a urinal and sensor
A106/1120 Mounting frame for handle
A108/1300 Mounting frame for waste sink and faucet
A108F/1100 Mounting frame with cistern for a waste sink with outlet connection DN90/110 and faucet
A108F/1500 Mounting frame with cistern for a waste sink with outlet connection DN90/110 and faucet
A113/1120 Mounting frame for wall-hung WC combi
A114/1120 Mounting frame for wall-hung WC
A114S/1200 Mounting frame for wall-hung WC and sensor

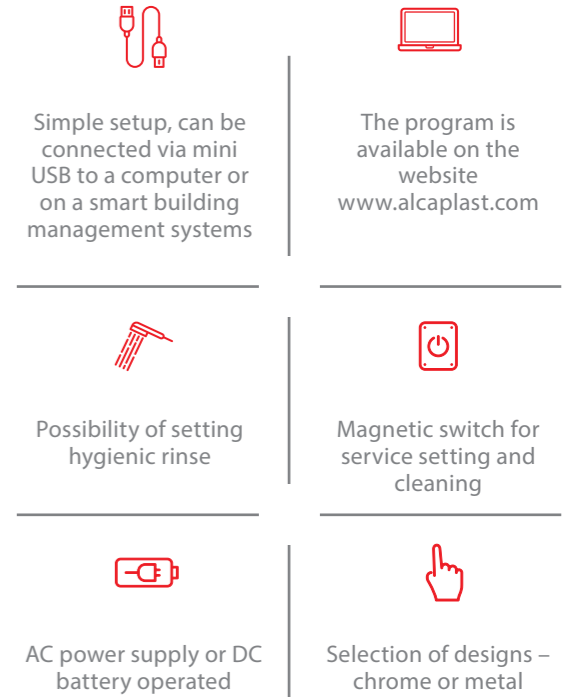
SENSOR PROGRAM

Flush plates with sensor



M279S Antivandal Flush plate Antivandal with sensor for pre-wall installation systems, metal (AC power supply)
M370S Flush plate with sensor for pre-wall installation systems, white (AC power supply)
M371S Flush plate with sensor for pre-wall installation systems, chrome-polished (AC power supply)
M279SB Antivandal Flush plate Antivandal with sensor for pre-wall installation systems, metal (DC battery operated)
M370SB Flush plate with sensor for pre-wall installation systems, white (DC battery operated)
M371SB Flush plate with sensor for pre-wall installation systems, chrome-polished (DC battery operated)

Sensor program benefits:



Simple setup, can be connected via mini USB to a computer or on a smart building management systems
 The program is available on the website www.alcaplast.com
 Possibility of setting hygienic rinse
 Magnetic switch for service setting and cleaning
 AC power supply or DC battery operated
 Selection of designs – chrome or metal

Automatic WC flushing systems



ASP3 Automatic WC flushing system, chrome, 12 V (AC power supply)
ASP3-K Automatic WC flushing system, metal, 12 V (AC power supply)
ASP3-KT Automatic WC flushing system, metal, manual, 12 V (AC power supply)
ASP3-B Automatic WC flushing system, chrome, 6 V (DC battery operated)
ASP3-KB Automatic WC flushing system, metal, 6 V (DC battery operated)
ASP3-KBT Automatic WC flushing system, metal, manual, 6 V (DC battery operated)

The Sensor program includes products designed for non-contact use of toilet and urinal. The programme is designed for high usage installations and fully complies with the applicable EU hygiene standards. The sensors are equipped with an adjustable hygienic rinse where the toilet bowl rinses itself with water after a selected number of flushes or after the specified time since the last flush. The Sensor program can be used for both wall-hung WC bowls and urinals.

Automatic flushing systems for urinals



ASP4 Automatic flushing system for urinal, chrome, 12 V (AC power supply)
ASP4-K Automatic flushing system for urinal, metal, 12 V (AC power supply)
ASP4-KT Automatic flushing system for urinal, metal, manual, 12 V (AC power supply)
ASP4-B Automatic flushing system for urinal, chrome, 6 V (DC battery operated)
ASP4-KB Automatic flushing system for urinal, metal, 6 V (DC battery operated)



SPECIFICATION OF PRE-WALL INSTALLATION SYSTEMS ALCA



Visit us on the Web



Flush plates compatibility

Flush plates ALCA:

They are fully compatible with all ALCA pre-wall installation systems.



Dual flush

Dual flush 3/6 l with a hygienic reserve:

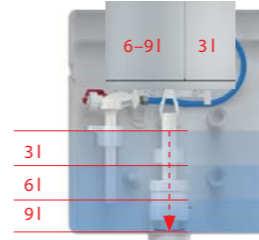
The volume of water in the cistern: 9 l

Small flush: 3 l

Large flush: 6 l

Hygienic reserve: 3 l

After the large flush a three-liter-reserve remains for the possible need of additional rinsing.



New feet lock system

The feet lock system allows **setting the necessary building height of the frame profile** and then you ensure its final position by tightening. This eliminates the need for the assistance of another person during the installation and also increases the accuracy of the installation.



Spare parts

25-year availability guarantee of all spare parts.

Spare parts catalogue:

Download on website www.alcaplast.com.

Consulting:

Possibility of telephone and internet consultations with Alcaplast engineers.



Ecological flushing

Any pre-wall installation system **ALCA** (except Slim system) can be easily converted to the **ECOLOGY** variant by replacing the standard flushing valve with the A06E valve and choosing the right type of WC ceramics. Flushing volume can be adjusted from 2 to 9 litres.



Safe and easy water connections

Closing the water inlet in the cistern:

Angle valve SCHELL (saddle).

Connection to the transition fitting:

Mounted during production, guaranteed tightness.

Water supply pipe with o-ring.



Water flow control

By inserting and setting of the water flow control you can change the dynamics of the water flow, thus avoiding unwanted splashing of water during flushing. The reduction is suitable for all types of pre-wall installation systems, flushing valves and cisterns **ALCA**. (except Slim system and A08A).



Optional accessories

All accessories included in packing:

The packaging of every product contains a complete set of installation accessories for mounting the WC bowl, including anchoring material and all necessary installation caps.



Cistern made of 1 piece

Guaranteed impermeability:

The water cistern is made of one piece, which ensures its absolute impermeability.

100% control:

Tightness of each cistern is controlled by air pressure.

Quality material:

Polyethylene (PE) – ensures long-term stable characteristics and durability.



All with one wrench

The sizes of the bolt heads were unified for the pre-wall installation systems. **Newly, installation now requires only one wrench size** to install the whole pre-wall installation system.



Frame height 1,120 mm and center mark of the frame

Following the trend of using large-format tiles, we have reduced the height of the support frame from the original 1,176 mm to **1,120 mm**. The system is now better suited to be installed even in places that have a height of 1.2 m. Newly, we also added a **center mark** and leveling mark on the frame.



Simple setup

All components that require to be fixed, adjusted or set up in the system have been **highlighted in red**. The aim is to simplify installation steps and thereby speed up the installation.





Visit us on the Web

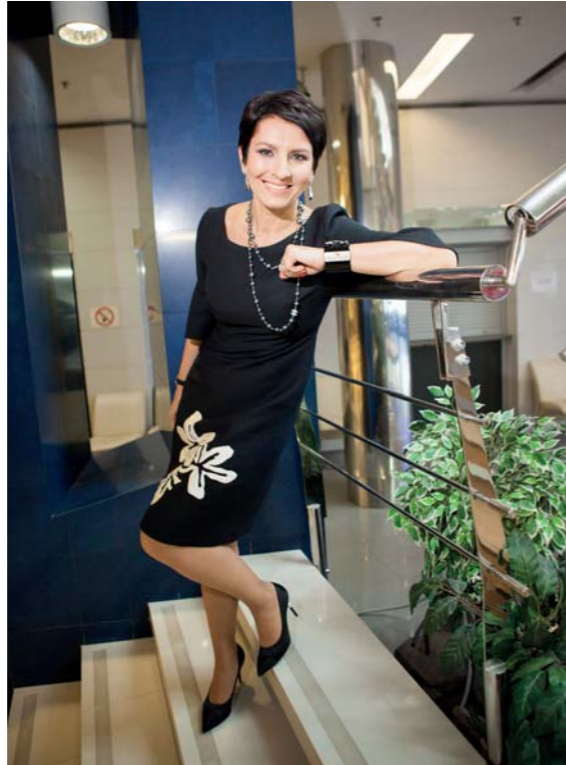


Company foundation

Czech family business which was founded in 1998. At that time, we produced only two products – fill and flushing valve. The current wide range of Alcaplast products has become the best selling in their field in many countries all over the world.

Czech 100 Best Companies

At the end of 2017, our company Alcaplast was among the hundred most important Czech companies. Success in the competition Czech 100 Best confirmed its outstanding position in the economic system in the Czech Republic.



Manager of the year 2015

Victory of our Executive Director Radka Prokopová in the most prestigious managerial competition in the Czech Republic by winning the award and title of “Manager of the Year 2015” for the implementation of modern methods of corporate management.



Czech product from Czech engineers

Quality, technical solutions, innovation, design – these are the primary characteristics of Alcaplast products. The high level of professionalism and skill of our Czech technicians is based on the historical tradition of Czech industry, which is over 100 years old, and renowned worldwide for its top quality products that are modern and extremely reliable.



ALCA – a premium brand

Premium brand ALCA represents a number of design products thoroughly elaborated with high utility value with Alcaplast being the creator of new trends in sanitary technology. Our cooperation with leading Czech designers in creating new product lines has won us several prestigious awards.

Six international branches Alcaplast

We design our products so that they can simplify life across many countries. They are universal and they meet demanding international standards. Alcaplast distribution warehouses and sales teams in countries outside of the Czech Republic provide flexible communication and service to our customers.



Quality control

The production process is controlled by the quality management system ISO 9001:2015 and is certified by Det Norske Veritas. The products are tested and certified by the Institute for Testing and Certification ITC Zlin in the Czech Republic and OFI in Austria. All products are continuously monitored in our own in house laboratory guaranteeing a high level of quality and reliability.

Alcaplast Academy

The Alcaplast Academy was established in 2009. The training center was introduced to support education of Alcaplast customers based on the presentation and direct professional training associated with our products. Alcaplast Academy was ranked second in the category of training centers in “Business Project 2010”. Over 3,000 professionals pass through our training every year. They are a guarantee of professional installation and technical support in the market.



Alca PLAST Academy

SKOLICÍ STŘEDISKO TRAINING CENTRE

Tradition, quality, innovation and design – these, along with the craftsmanship of our team, give shape to Alcaplast.

The ALCAPLAST team of specialists is always on hand to help with design, installation and quote project prices!

Czech product
ISO 9001:2015

Edition 1/2018 EN, © Alcaplast s. r. o.
Changes in dimensions and design reserved.



EN 55014-1, EN 55014-2, EN 61000-6, EN 61000-4
2011/65/EU including amendments
NV 117/2016 Sb., NV 118/2016 including amendments
(EU) č. 305/2011, EN 14055

Alca PLAST®

CZECH REPUBLIC

Alca plast s. r. o.
Bratislavská 2846, 690 02 Břeclav
tel.: +420 519 821 117 – Sales Dept CZ
tel.: +420 519 821 041 – Export Dept
fax: +420 519 821 083
e-mail: alcaplast@alcaplast.com
www.alcaplast.com

