



# WallGard Graffiti Barrier

**Reversible  
graffiti-resistant  
protective barrier**



## WHERE TO USE

- Protection of marble, granite and other natural stone facings against spray-painted graffiti.
- Protection for fair-faced surfaces.

## Some application examples

On all surfaces that are potential targets for graffiti, such as:

- all types of natural stone facings;
- brick or concrete block facings;
- concrete facings;
- renders resistant to high pressure cleaning with hot water;
- pre-painted wood and iron structures.

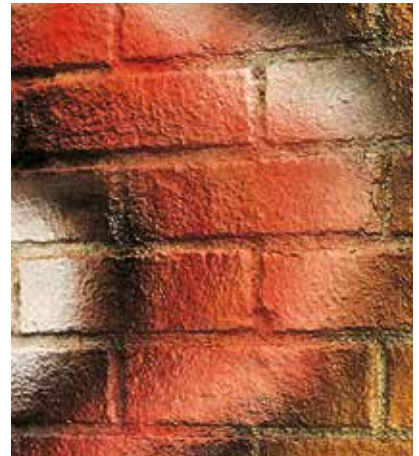
## TECHNICAL CHARACTERISTICS

**WallGard Graffiti Barrier** is a water emulsion of polymer waxes specifically formulated for reversible protection of facings against graffiti.

**WallGard Graffiti Barrier** fills surface pores without affecting permeability, creating a repellent barrier against oils and water that prevents graffiti from penetrating deeply.

After application, **WallGard Graffiti Barrier** forms a film that has very little effect on the appearance of the treated surface. To check its

effect on the surface finish, we recommend testing the product on a small area. To get the best result apply the product right up to the string-course, expansion joints or guttering.



**WallGard Graffiti Barrier** is easily removable using hot water (about +80°C) in a high pressure cleaner.

## RECOMMENDATIONS

- Do not use **WallGard Graffiti Barrier** to consolidate surfaces.
- Do not dilute **WallGard Graffiti Barrier** with solvents or water.
- Do not apply **WallGard Graffiti Barrier** on non-absorbent surfaces such as polished marble or porcelain.



## WallGard Graffiti Barrier

- Do not apply **WallGard Graffiti Barrier** on substrates that are saturated with water or when rain is imminent.
- Do not apply **WallGard Graffiti Barrier** at temperatures below +5°C and above +35°C.



Using a high-pressure cleaner on granite treated with **WallGard Graffiti Barrier**



Using high-pressure cleaner on concrete treated with **WallGard Graffiti Barrier**

**Note:** *Graffiti should be removed from surfaces treated with **WallGard Graffiti Barrier** by using a high pressure cleaner with water at +80°C. We recommend verifying beforehand that the substrate can withstand the physico-mechanical stress.*

### HOW TO USE

#### Preparing the substrate

The surface to be treated with **WallGard Graffiti Barrier** must be perfectly clean and solid.

Completely remove dirt, dust, grease, oil, and saline efflorescence by sanding, sandblasting or high-pressure cleaning.

Wait some hours before applying **WallGard Graffiti Barrier**, which can be applied even when the substrate is slightly damp.

#### Preparing the product

**WallGard Graffiti Barrier** is ready to use

and should not be diluted with water or solvents.

### Application procedure

**WallGard Graffiti Barrier** can be applied with brush, roller, spray or airless gun. The latter are preferable for rough or irregular surfaces. For thorough impregnation **WallGard Graffiti Barrier** should be applied to saturation in a single coat.

On very porous surfaces, apply a second coat, if needed, 20 minutes later at +20°C.

### Graffiti removal

Graffiti can be removed from surfaces treated with **WallGard Graffiti Barrier** using hot water (about +80°C) in a high pressure cleaner.

Traces of graffiti that have penetrated into the surface may be removed with **WallGard Graffiti Remover Gel**, a special detergent gel. (see Technical Data Sheet).

After removing the graffiti with high-pressure cleaning, renew the protection with a new application of **WallGard Graffiti Barrier** even if the surface is slightly damp.

### Cleaning

Brushes, rollers, spray or airless guns can be cleaned with water before the product dries.

### CONSUMPTION

0,03 to 0,15 kg/m<sup>2</sup> per coat, depending on the porosity of the substrate.

### PACKAGING

5-kg and 20-kg buckets.

### STORAGE

24 months in its original packaging stored in a dry place away from sources of heat and at a temperature between +5°C and +30°C. Protect from frost.

### SAFETY INSTRUCTIONS FOR PREPARATION AND APPLICATION

**WallGard Graffiti Barrier** is irritant for the eyes.

During use wear protective gloves and goggles and take the usual precautions for handling chemicals. In case of contact with the eyes or the skin wash immediately with plenty of water and seek medical attention.

For further and complete information about the safe use of our product please refer to the latest version of our Material Safety Data Sheet.

PRODUCT FOR PROFESSIONAL USE.

## TECHNICAL DATA (typical values)

### PRODUCT IDENTITY

Consistency:	liquid
Colour:	milky white
Density (EN ISO 2811-1) (g/cm <sup>3</sup> ):	approx. 0.98
Dry solids content (EN ISO 3251) (%):	approx. 14

### APPLICATION DATA

Dilution rate:	ready-to-use
Application temperature:	+5°C to +35°C
Consumption (kg/m <sup>2</sup> ):	0.03-0.15 according to the porosity of the substrate

### FINAL PERFORMANCE

VOC content of ready-to-use product (European Directive 2004/42/EC) (g/l):	≤ 15
--	------



Using a high-pressure cleaner on Carrara marble treated with WallGuard Graffiti Barrier

### WARNING

Although the technical details and recommendations contained in this product data sheet correspond to the best of our knowledge and experience, all the above information must, in every case, be taken as merely indicative and subject to confirmation after long-term practical application; for this reason, anyone who intends to use the product must ensure beforehand that it is suitable for the envisaged application. In every case, the user alone is fully responsible for any consequences deriving from the use of the product.

Please refer to the current version of the Technical Data Sheet, available from our website [www.mapei.com](http://www.mapei.com)

### LEGAL NOTICE

The contents of this Technical Data Sheet ("TDS") may be copied into

**another project-related document, but the resulting document shall not supplement or replace requirements per the TDS in force at the time of the MAPEI product installation. The most up-to-date TDS can be downloaded from our website [www.mapei.com](http://www.mapei.com). ANY ALTERATION TO THE WORDING OR REQUIREMENTS CONTAINED OR DERIVED FROM THIS TDS EXCLUDES THE RESPONSIBILITY OF MAPEI.**



**All relevant references for the product are available upon request and from [www.mapei.com](http://www.mapei.com)**



**WallGard Graffiti  
Barrier**



**BUILDING THE FUTURE**

Any reproduction of texts, photos and illustrations published here is prohibited and subject to prosecution

**340-3-2017 (GB)**